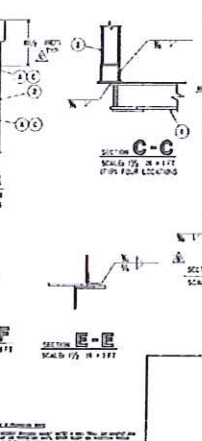
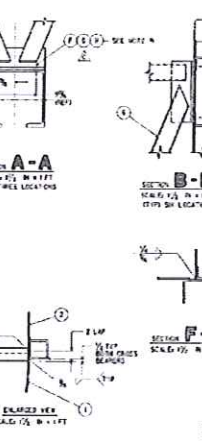
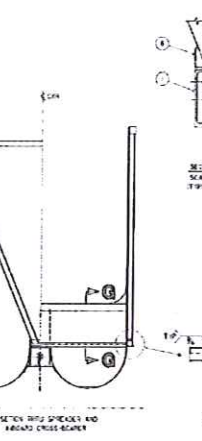
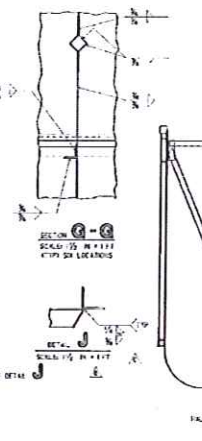
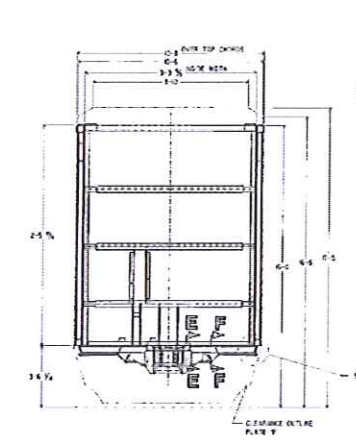
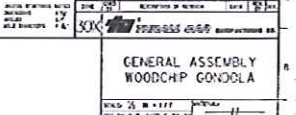
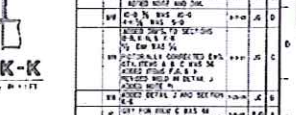
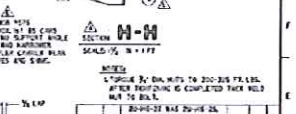
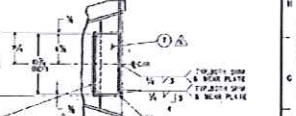
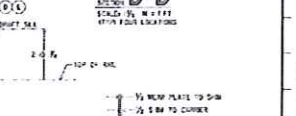
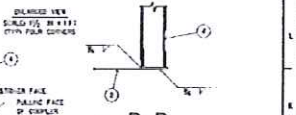
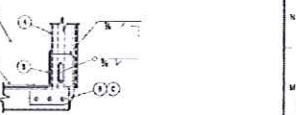


| DESCRIPTION | QTY | SCALE | REV | DATE |
|--------------------------------|-----|----------|-----|------|
| ENGINEERING APPROVAL | 1 | AS SHOWN | | |
| ISSUE FOR FABRICATION | 1 | AS SHOWN | | |
| FOR ASSEMBLY IN SHOP | 1 | AS SHOWN | | |
| FOR ASSEMBLY IN FIELD | 1 | AS SHOWN | | |
| FOR CONSTRUCTION OF FOUNDATION | 1 | AS SHOWN | | |
| FOR CONSTRUCTION OF BRIDGE | 1 | AS SHOWN | | |
| FOR CONSTRUCTION OF ROADWAY | 1 | AS SHOWN | | |
| FOR CONSTRUCTION OF SIDEWALK | 1 | AS SHOWN | | |
| FOR CONSTRUCTION OF CURB | 1 | AS SHOWN | | |
| FOR CONSTRUCTION OF SIDEWALK | 1 | AS SHOWN | | |

| DESCRIPTION | QTY | SCALE | REV | DATE |
|--------------------------------|-----|----------|-----|------|
| ENGINEERING APPROVAL | 1 | AS SHOWN | | |
| ISSUE FOR FABRICATION | 1 | AS SHOWN | | |
| FOR ASSEMBLY IN SHOP | 1 | AS SHOWN | | |
| FOR ASSEMBLY IN FIELD | 1 | AS SHOWN | | |
| FOR CONSTRUCTION OF FOUNDATION | 1 | AS SHOWN | | |
| FOR CONSTRUCTION OF BRIDGE | 1 | AS SHOWN | | |
| FOR CONSTRUCTION OF ROADWAY | 1 | AS SHOWN | | |
| FOR CONSTRUCTION OF SIDEWALK | 1 | AS SHOWN | | |
| FOR CONSTRUCTION OF CURB | 1 | AS SHOWN | | |
| FOR CONSTRUCTION OF SIDEWALK | 1 | AS SHOWN | | |



| NO. | DESCRIPTION | QTY | SCALE | REV | DATE |
|-----|--------------------------------|-----|----------|-----|------|
| 100 | ENGINEERING APPROVAL | 1 | AS SHOWN | | |
| 101 | ISSUE FOR FABRICATION | 1 | AS SHOWN | | |
| 102 | FOR ASSEMBLY IN SHOP | 1 | AS SHOWN | | |
| 103 | FOR ASSEMBLY IN FIELD | 1 | AS SHOWN | | |
| 104 | FOR CONSTRUCTION OF FOUNDATION | 1 | AS SHOWN | | |
| 105 | FOR CONSTRUCTION OF BRIDGE | 1 | AS SHOWN | | |
| 106 | FOR CONSTRUCTION OF ROADWAY | 1 | AS SHOWN | | |
| 107 | FOR CONSTRUCTION OF SIDEWALK | 1 | AS SHOWN | | |
| 108 | FOR CONSTRUCTION OF CURB | 1 | AS SHOWN | | |
| 109 | FOR CONSTRUCTION OF SIDEWALK | 1 | AS SHOWN | | |
| 110 | FOR CONSTRUCTION OF CURB | 1 | AS SHOWN | | |

GENERAL ASSEMBLY
WOODCHIP GONDOLA

SCALE: 1/8" = 1'-0"

DATE: 10/15/55

BY: J. W. WOOD

NO. 002-458