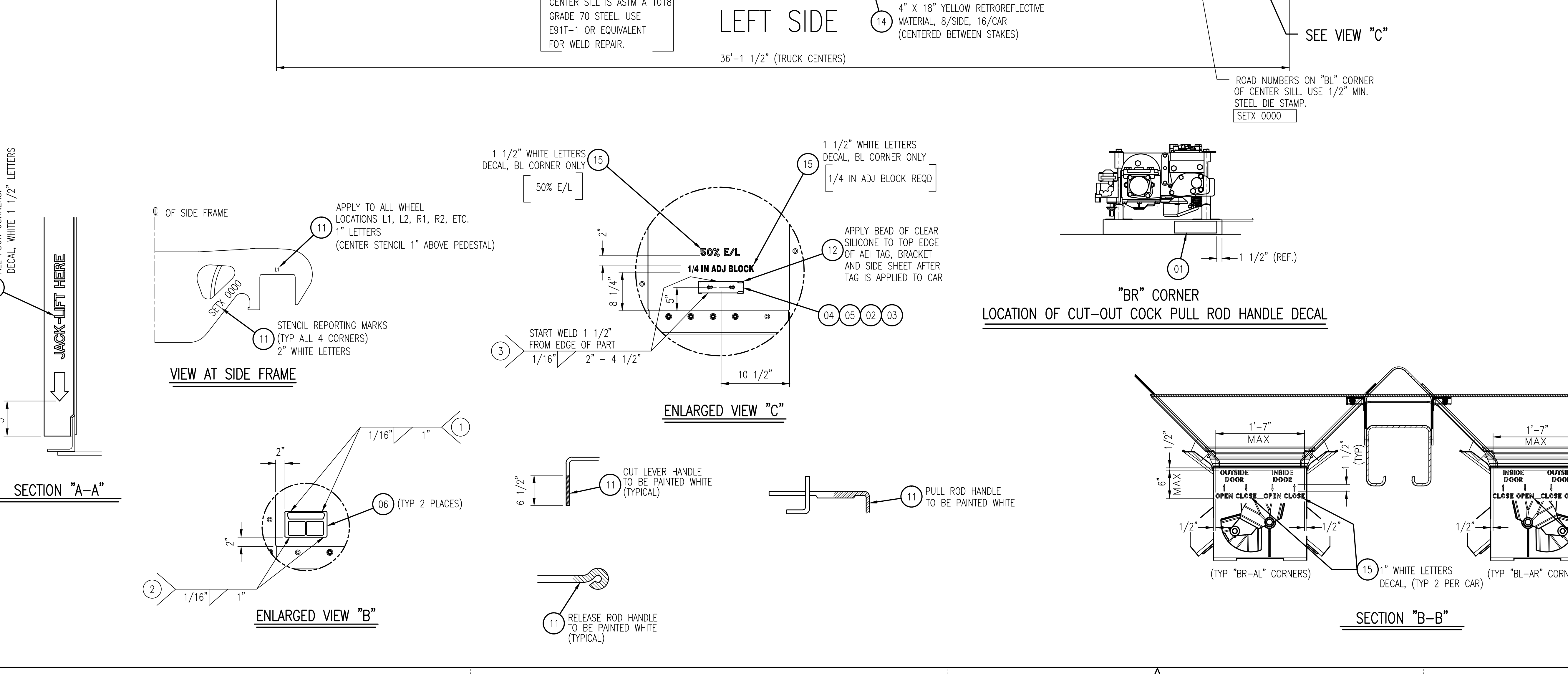
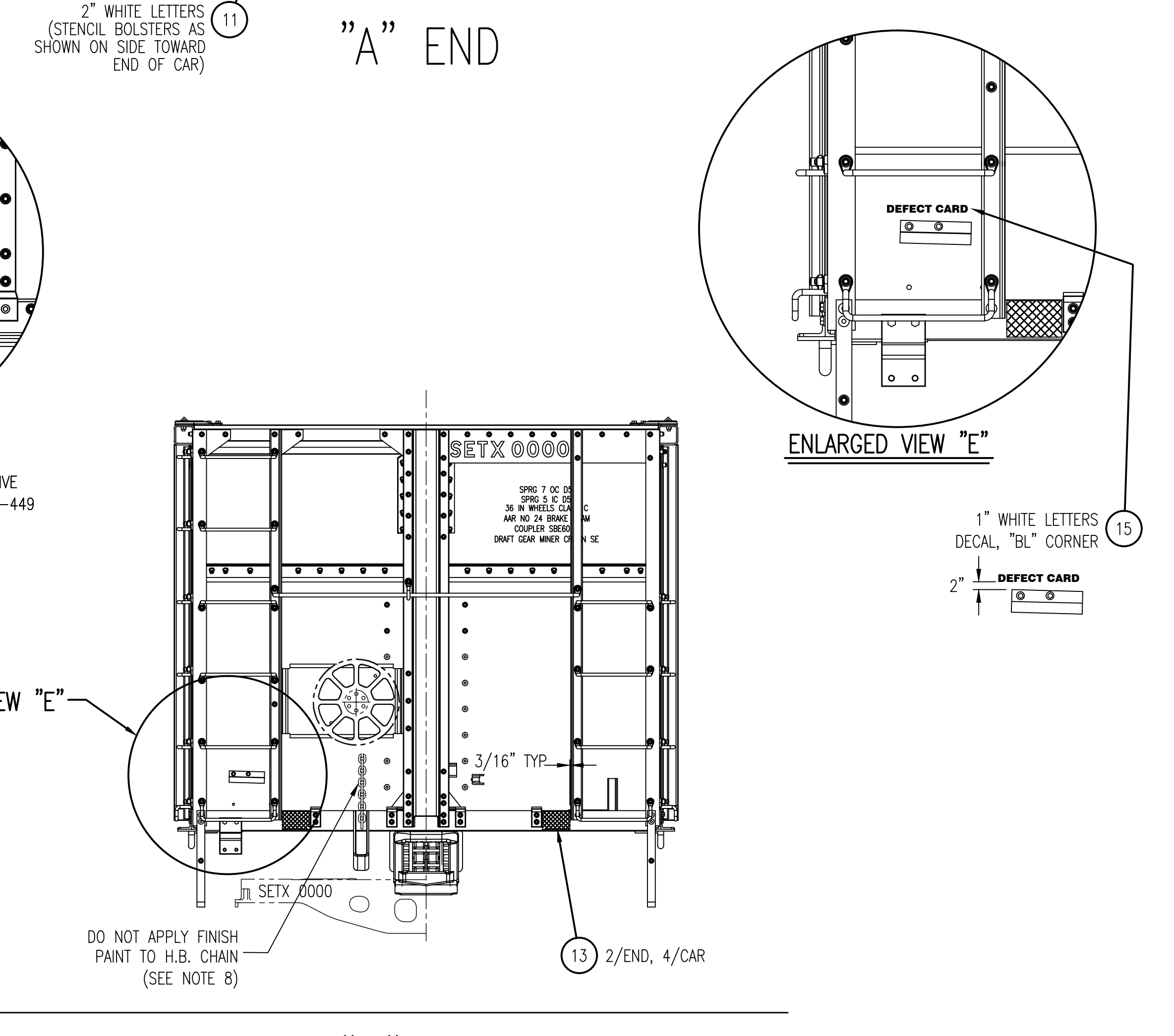
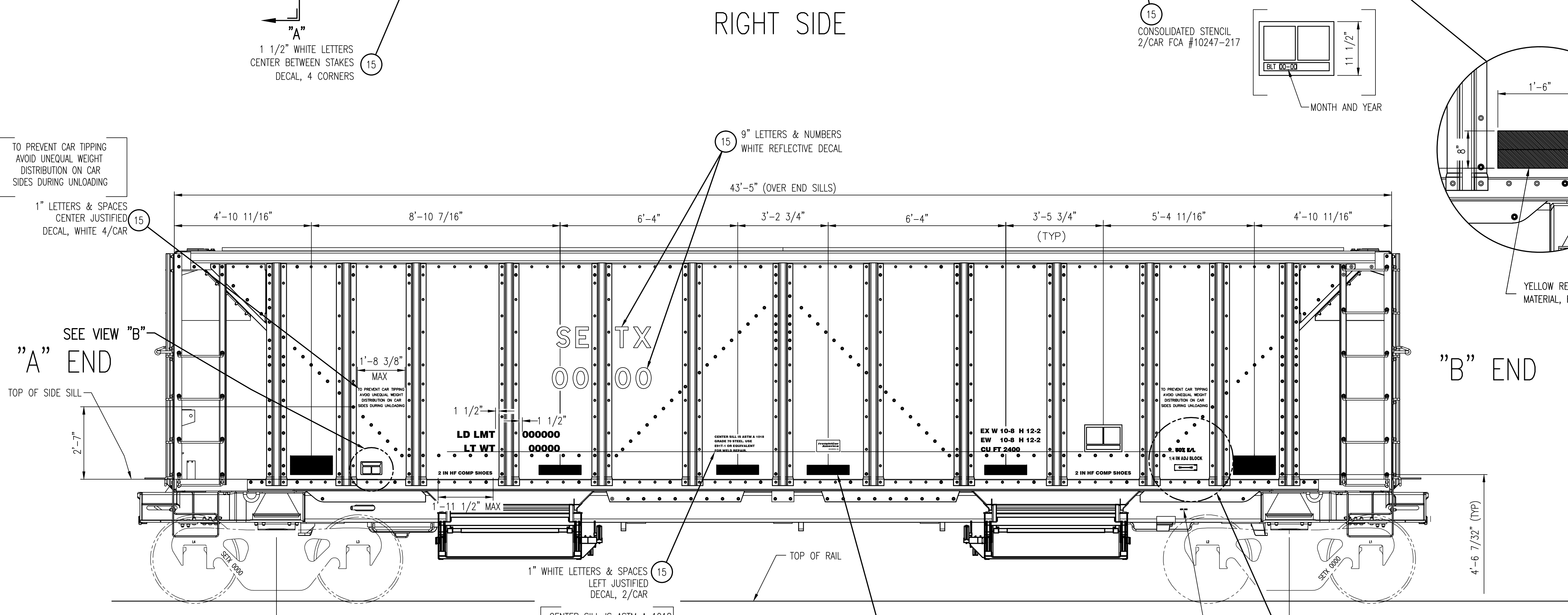
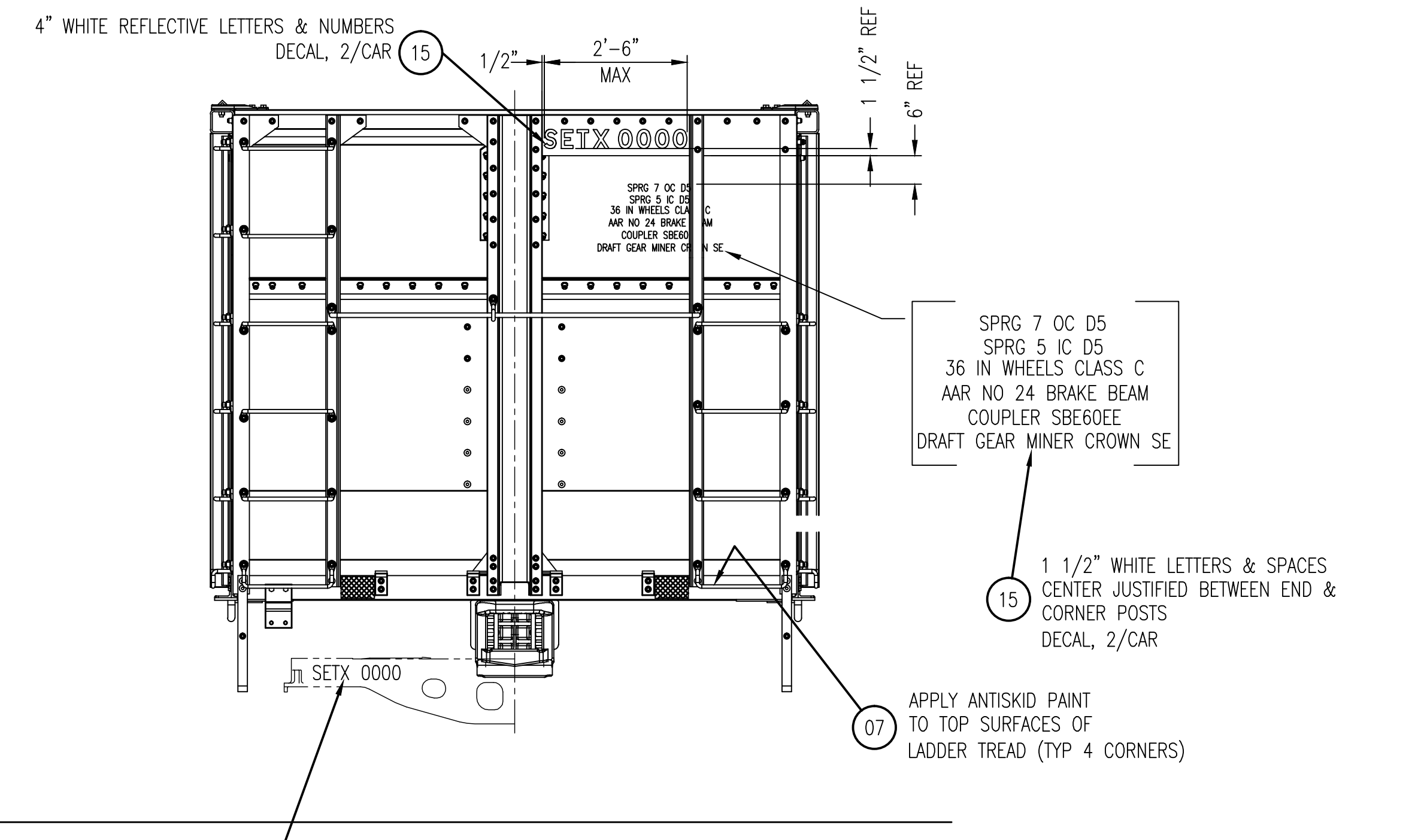
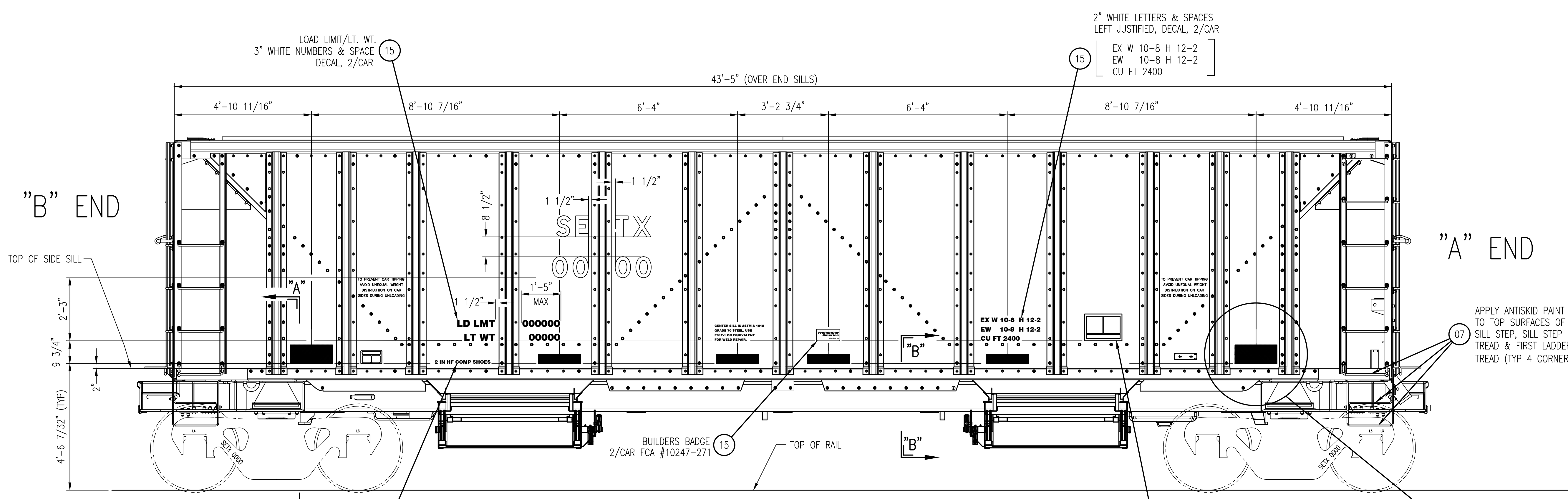


BILL OF MATERIAL				BILL OF MATERIAL			
Item No.	Part No.	Description	Quantity	Item No.	Part No.	Description	Quantity
09	10242-211	PANT, GRAY WELDABLE PRIMER	0.006	01	10210-260	DECAL, PULLROD KIT	1
10	10242-218	PANT, MINERAL BROWN, DTM WATERBASE	30	02	10220-001-02	BOLT, 1/4" DIA. X 3"	2
11	10242-220	PANT, STENCIL WHITE, DTM WATERBASE	0.10	03	10220-001-03	NUT, 1/4" CENTER LOCK, NYLON	2
12	10243-017	SILICONE, RTV CLEAR	0.006	04	10220-001-04	BRACKET, AEI TAG	2
13	10246-994	DELINEATOR, WHITE, 4 5/8" X 7"	4	05	10220-015	AEI TAG	2
14	10247-449	REFLECTIVE MATERIAL, YELLOW, 4" X 18"	AS REQ'D	06	10226-011	HOLDER, ROUTE CARD	2
15	10247-627	DECAL, COMPLETE CAR SET	1	07	10242-039	PANT, NON-SKID, WATERBASE GRAY	0.006
				08	10242-043	PANT, GRAY OXIDE RUST PREVENTIVE	1.5



- STENCILING/DECALS**
- TRUCKS TO HAVE WHITE LETTERS AND NUMBERS STENCILED ON BLACK BACKGROUND.
 - DECALS ON BLACK OR MINERAL BROWN BACKGROUND TO BE WHITE.
- LOAD LIMIT IS THE DIFFERENCE BETWEEN 286,000 LBS. AND LIGHTWEIGHT OF CAR. THE LIGHTWEIGHT SHALL BE THE MULTIPLE OF 100 LBS. NEAREST THE SCALE WEIGHT. WHEN SCALE WEIGHT INDICATES AN EVEN 50 LBS., THE LOWER MULTIPLE IS USED.
- MISC. NOTES:**
- DO NOT GREASE MINER GATES
- PAINTING**
- EXTERIOR SURFACE OF UNDERFRAME AND CAR BODY TO BE PREPARED FOR PAINTING PER SPECIFICATION SSPC-SP7.
 - UNDERFRAME AND CAR BODY TO RECEIVE MINERAL BROWN FINISH PAINT (DAVIS FROST # 14-N612) TO A 4 MIL MIN. COMBINED DRY FILM THICKNESS.
 - ENDS OF RELEASE ROD HANDLES, RETAINER VALVE, ANGLE COCK HANDLES, AND UNCOUPLING LEVER HANDLES TO BE PAINTED WHITE.
 - TRUCKS TO HAVE ONE LIGHT BODIED COAT OF PAINT AS RECEIVED FROM SUPPLIER. IF NECESSARY, TOUCH-UP PAINT TO BE APPLIED TO AREAS ON TRUCKS WHERE NEEDED.
 - COAT INTERIOR OF THE ROLL FORMED (TYPED FLANGE) CENTER SILL WITH GRAY OXIDE RUST PREVENTATIVE, 1 MIL MIN. DRY FILM THICKNESS, 11 MIL MAXIMUM.
 - ONE COAT OF WATER BASED PRIMER OR PAINT TO BE APPLIED TO ALL FASTENED STEEL-TO-STEEL SURFACES PRIOR TO ASSEMBLY, 3 MIL MIN. DRY FILM THICKNESS. INSIDE OF SIDE TOP CHORD TO BE GIVEN ONE COAT OF WATER BASED PRIMER OR PAINT APPROX. 4 FT. IN FROM BOTH ENDS.
 - WITH HANDBRAKE IN FULL-RELEASE POSITION, DO NOT ADD ANY ADDITIONAL BLACK FINISH PAINT TO THE H.B. CHAIN FROM BOTTOM OF HOUSING TO THE FIRST CONNECTOR. HOWEVER, THE FIRST THREE FULL CHAIN LINKS OUTSIDE OF HOUSING IN THE FULL-RELEASE POSITION TO BE PAINTED WHITE.
 - ONE COAT OF WELDABLE PRIMER TO BE APPLIED TO UNDERSIDE OF DEFLECTOR ANGLE AND TOP SURFACE OF SIDE TOP CHORD, 3 MIL MIN. DRY FILM THICKNESS.
- NOTES:**

160005	SETX 1001 - 1010	10
Order No.	Car Series No.	No. Cars/Order
FreightCar America		
<small>THIS DRAWING IS THE EXCLUSIVE PROPERTY OF FREIGHTCAR AMERICA AND CONTAINS CONFIDENTIAL AND PROPRIETARY INFORMATION. ACCEPTING THIS DRAWING, THE PURCHASER AGREES TO BE BOUND BY THE DRAWING ONLY FOR THE WORK SHOWN ON IT AND TO NOT DISCLOSE THIS DRAWING TO ANY PERSON OR ENTITY, NOR USE THE DRAWING FOR THE DESIGN OR MANUFACTURE OF ANY ITEM, PART, OBJECT OR APPLICABLE SUBJECT, EXCEPT WITH THE WRITTEN PERMISSION OF FREIGHTCAR AMERICA.</small>		
Standard Tolerances (Unless Noted)		
Fractional dimensions 1/16"	From Drawings 1/32"	
Decimal dimensions ±0.063"	Angles ±1°	
Diagonals 1/8" max. variation	All dim's in [] are for reference only	
Bores will be thickness of material	Tolerances are not to be accumulative	
Made By: MCH	Date: 02-01-11	Ref. Dwg: A093594-001
Approved: CW		
ARRANGEMENT, STENCIL		
Sheet No. 1 of 1	Size E	Part No. A093680-000

PRELIMINARY